

Chapter 1

Introduction

Congratulations on choosing DISH Network. You are about to experience the excitement and convenience of Digital Broadcast Satellite (DBS) service, which delivers the very best in picture and sound quality. DISH Network consistently provides state-of-the-art products and satellite-delivered services — with high performance, ease of operation, and a wide variety of entertainment options.

Welcome!

You're about to enjoy a Digital Video Recorder!

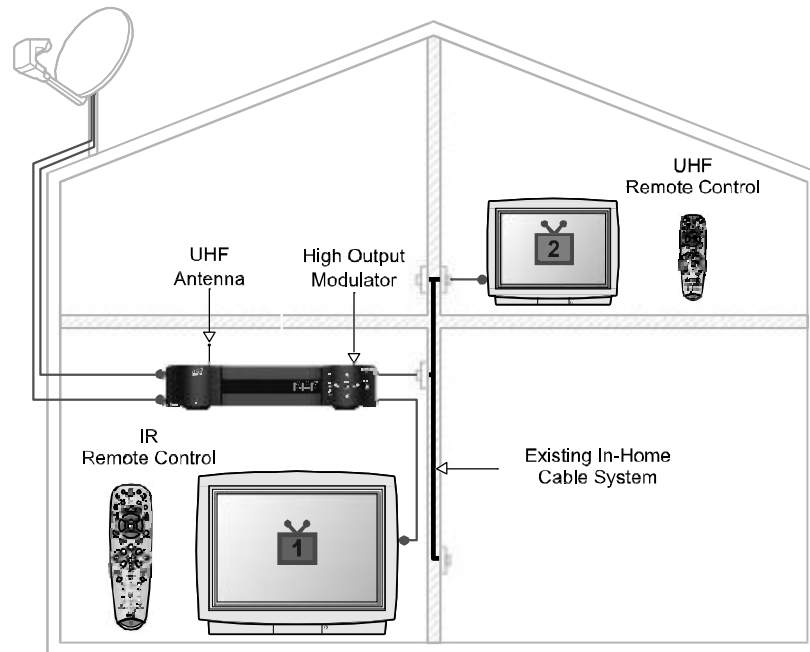
This satellite receiver lets you decide how you watch TV. You can record and play back audio and video with full digital quality. You can pause a live program and not miss any of the action or you can record a program to watch later, without a VCR.

IMPORTANT INFORMATION ABOUT THIS RECEIVER

- Always handle the satellite receiver carefully. Avoid excessive shock and vibration at all times as this can damage the hard drive.
- If you have the receiver turned on and need to move it, be sure to unplug the receiver and *let it sit for at least 30 seconds* before moving it.
- Do not install the receiver in any area where the temperature can be less than 40°F or more than 113°F while the unit is operating.
- If the receiver is cold to the touch, do not plug it in immediately. Let it sit *unplugged* at room temperature for at least 45 minutes before plugging it in.
- Avoid installing the receiver on top of or underneath another electronic device (such as a stereo receiver) as this can cause heat build-up and vibration.

Note: Portions of your system may be marked with *DishPVR* and *PVR* or *DishDVR* and *DVR*. Either way, the system works the same.

About this Receiver



To gain a better understanding of your DISH Network satellite receiver, look at the picture above. This receiver is a two-tuner satellite receiver that allows you to watch different programs in two locations:

- Nearby TV - Programming from the receiver is delivered to the nearby TV using short audio/video cables.
- Remote TV - Programming from the receiver is delivered to the remote TV using existing in-home coaxial cable.

Two remote controls come with your receiver:

- An Infrared (IR) remote to control programming for the TV near the receiver. This remote is labeled with a green number 1, which matches similar markings on the receiver output connections and the menus for the nearby TV.
- An Ultra-High Frequency Pro (UHF Pro) remote to control programming to a second TV located in another room away from the receiver. This remote is labeled with blue number 2, which matches the similar markings on the receiver output connections and the menus for the remote TV.

Overview

Before you use your satellite receiver, you need to install the system or have it installed by a professional technician. For a professional installation, please call the Customer Service Center at 1-800-333-DISH (3474). If you install the system yourself, use the instructions in *Chapter 2*.



A vital part of the installation is to set up the receiver to get the latest software from the satellite signal. If you are installing a new system and follow the instructions in *Chapter 4*, your receiver will automatically get this software.

For information on the receiver and its installation, read *Chapter 2, Receiver Description and Installation* beginning on page 17.

For information on any specific feature or function, read *Chapter 3, Using The System* beginning on page 37.

For information on assembling and installing a dish antenna, read *Chapter 4, Dish Antenna Installation* beginning on page 91.

If you have a problem operating the system or receive an error message, use the *Troubleshooting Tables* beginning on page 107.

Tips

In the margins of pages throughout this guide are tips and other information to make using your satellite receiver easier.

Conventions

To make it easy for you to use this guide, we use the following conventions.

- The names of remote control buttons are all uppercase.
Example: Press the **SAT** button.
- Menus and options that appear on the TV screen are in bold type.
Example: Open the **Program Guide**.
- *Select* means to move the highlight to an on-screen option or choice in a list and press the **SELECT** button on the remote control.
Example: Select the **Locks** option.
- Connections on the back of the receiver are in small capital letters.
Example: **SATELLITE IN**
- Where this guide mentions *nearby TV*, it refers to the TV near the receiver. The nearby TV receives TV1 menus and programming from the receiver's TV1 outputs and is connected using short audio/video cables.
- Where this guide mentions *remote TV*, it refers to the cable-ready TV(s) located in rooms away from the receiver. The remote TV receives TV2 menus and programming from the receiver's TV2 outputs through your in-home cable system.
- Where this guide mentions *remote control*, it refers to either Remote Control 1 when viewing a nearby TV or Remote Control 2 when viewing the remote TV(s). If a specific remote control must be used, this guide will refer directly to Remote Control 1 or Remote Control 2.

Getting Started

After your system has been installed, order and watch your programming using the following steps:

Step 1: Ordering Your Programming

1. Using a remote control, press **SAT** and then press the blank **POWER** button to turn on the receiver. Make sure the TV is also on.

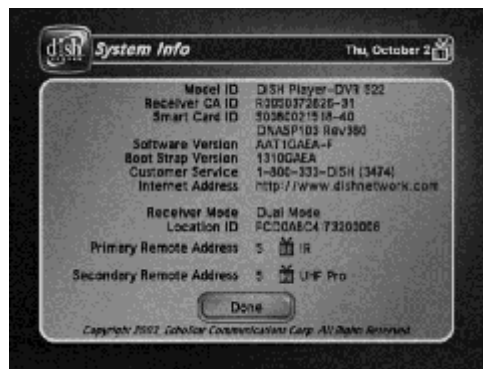


2. Press **GUIDE**.

You will see that some channels in the **Program Guide** appear in white. These channels can be viewed immediately. However, many channels will be in red. You cannot view these channels until you order programming.

3. Press the **SYSTEM INFO** button on the receiver front panel to display the **System Info** screen.

Note: The screen shown below is for example only. Be sure to use the numbers on the **System Info** screen displayed on your TV.



4. Call the Customer Service Center at 1-800-333-DISH (3474). A customer service representative will help you start DISH Network programming on your system and will discuss the various programming packages available.
5. Choose a package and the representative will authorize your programming.
6. Press **SELECT** to close the **System Info** screen.
7. Wait a few minutes and the channels you purchased will turn from red to white, and can now be viewed.

Step 2: Finding Programs to Watch

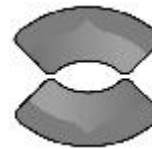
1. Press the **GUIDE** button.
2. When the **Program Guide** opens, use the **UP** or **DOWN ARROW** to view information on other channels. Press the **PAGE UP** and **PAGE DOWN** buttons to move you quickly through the **Program Guide**. The channels for the programming you ordered should be shown in white and are available for viewing. After you have highlighted a current program in the **Program Guide**, press **SELECT** to watch it.



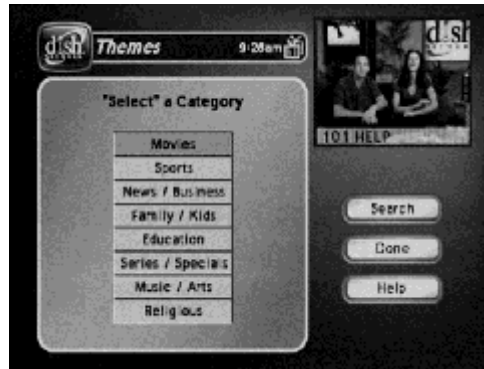
Quick Tour of Basic Features

This tour guides you quickly through a number of basic satellite receiver features accessible directly from the remote control without using menus. For more detailed information about each feature, see *Chapter 3, Using the System*.

1. Make sure the TV is on.
2. Press the **UP** or **DOWN ARROW** button on your remote control to change channels.
3. Press the **RECALL** button to go back to the last channel you watched.
4. Press the **THEMES (LEFT ARROW)** button to open the **Themes and Search** menu. This menu allows you to search for programming by themes (movies, sports, and more) or by key words used in the programming information.



Introduction

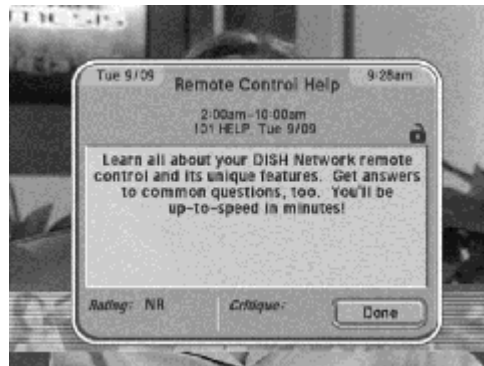


5. Select **Sports**.

6. Press the **VIEW TV** button to go back to watch a program.

7. Press the **INFO** button to see information about the program.

Note: The first time you press the **INFO** button, the information screen is transparent. Press the **INFO** button again to make the information screen solid. When you press the **INFO** button a third time, the information screen closes.



8. Press the **CANCEL** button to go back to watch the program.

9. Press the **BROWSE (RIGHT ARROW)** button to open the **Browse Banner**. The **Browse Banner** shows information on a program we're watching at the top, and information on two other programs at the bottom.





10. Press the UP or DOWN ARROW button to change the channel information you see at the bottom of the TV screen.



11. Press the RIGHT ARROW button to highlight the program coming on next at the bottom. Press the LEFT ARROW button to go back to the program on now.



12. Press the VIEW TV button to clear the Browse Banner from the TV screen and to go back to watching a program. Press SELECT to change to the highlighted channel.



Quick Tour of the Menus

This tour guides you quickly through the basic features available through the **Main Menu**. See *Chapter 3, Using the System* for more information about these and other features.

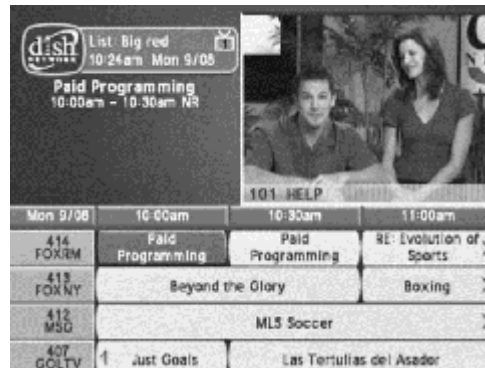
Note: The menu buttons that are grayed out indicate that while the features are not yet available on this system, they may become available with future software upgrades.

1. Press the remote control MENU button to open the **Main Menu**.



Introduction

2. Press the 1 button to select the **Program Guide** option on the **Main Menu**. This opens the **Program Guide** on the TV screen.



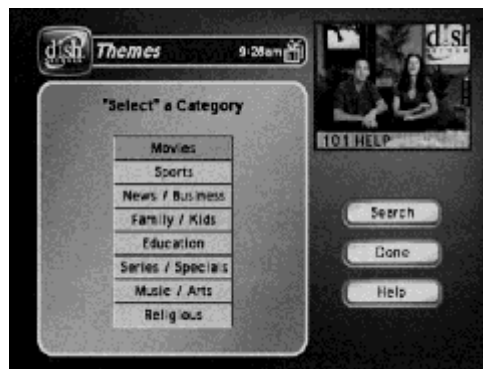
You can use the **Program Guide** to find and select a program to watch. For now, though, go on with this tour.

3. Press the **MENU** button to go back to the **Main Menu**.
4. Press the 2 button to select the **Themes and Search** option on the **Main Menu**. This menu allows you to search for programming by themes (movies, sports, etc.) or by key words used in the program information.

MENU



2



5. Press the **MENU** button to go back to the **Main Menu**.
6. Press the 3 button to select the **Customer** option. This menu provides convenient access to your DISH Network account to review your statement, pay your bill, upgrade programming, and more.

MENU



3





7. Press the 0 button to go back to the **Main Menu**.



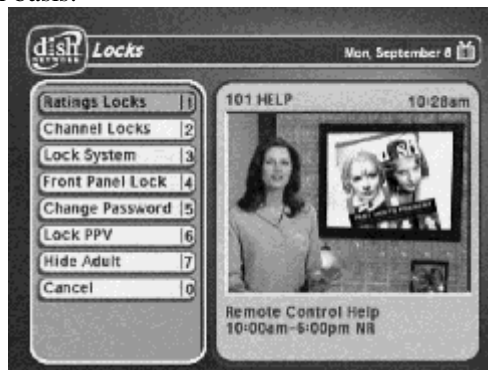
8. Press the 4 button to select the **Dish Home** option. You can order channels, check the news and weather, and even play games.



9. Press the MENU button to go back to the **Main Menu**.



10. Press the 5 button to select the **Locks** option on the **Main Menu**. This menu allows you to apply password-protected locks on programming based on rating, or even on a channel-by-channel basis.

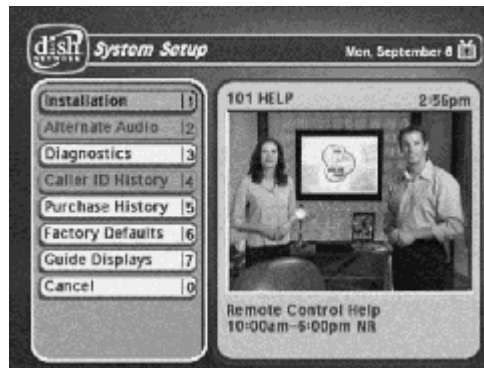


Introduction

11. Press MENU to go back to the **Main Menu**.



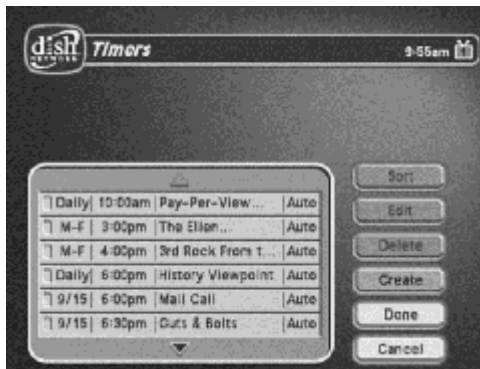
12. Press the 6 button to select the **System Setup** option on the **Main Menu**. Use this menu to set up the system the way you want.



13. Press MENU to go back to the **Main Menu**.



14. Press the 7 button to select the **Timers** option on the **Main Menu**. This menu is used for creating and changing timers used to trigger automatic channel changes, reminders, or DVR recordings.



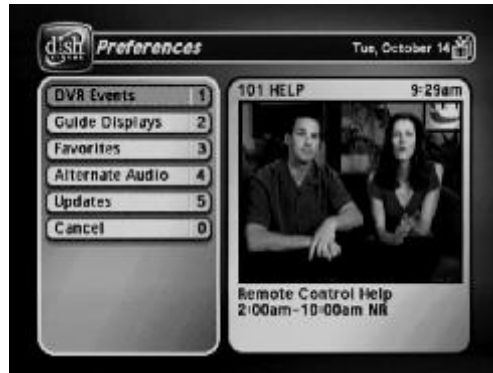
15. Press MENU to go back to the **Main Menu**.



16. Press the 8 button to open the **Preferences** menu. This menu allows you to set up your receiver to make it more convenient to use.



Quick Tour of Digital Video Recorder Features



17. Press **3** to open the **Favorites** menu. This menu allows you to set up lists of your favorite channels to make finding what you want to watch easier.



18. Press **MENU** to go back to the **Main Menu**.
19. Press the **VIEW TV** button to go back to watching a program.



Quick Tour of Digital Video Recorder Features

The following tour gives you an overview of the DVR features of your DISH Network satellite TV receiver. For instructions on specific functions, see *Chapter 3, Using the System*.

1. Watch a program for just a few minutes.
2. Press the **PAUSE** button to pause the program.



Introduction



3. Press the **PLAY** button to watch the program from the point where you paused it.
4. Press the **VIEW TV** button to go back right away to the “live” program.
5. Press the **SKIP BACK** button to skip back about ten seconds in the program.



6. Press the **PAUSE** button and then press the **BACK** button to reverse the program in slow motion. Press the **BACK** button *once* to reverse the program 1/4 the speed as normal play. Press the **BACK** button *twice* to reverse at normal speed. If you press the **BACK** button again, the program reverses as described in step 7.





7. Press the **BACK** button *once* to reverse the program four times as fast as normal play. Press the **BACK** button *twice* to reverse at 15 times normal speed, *three times* to reverse at 60 times normal speed, and *four times* to reverse at 300 times normal speed.



8. Press the **PLAY** button.
9. Press the **SKIP FWD** button to skip ahead about 30 seconds in the play back.
Note: You cannot skip ahead if you are watching live TV.



Introduction

10. Press the PAUSE button and then press the FWD button to forward the program in slow motion. When you press the FWD button *once* the program advances at 1/15 the speed of normal play. Press the FWD button *twice* to forward at 1/4 as fast as normal play. Press the FWD button *three times* to play the program at normal speed. If you press the FWD button again, the program advances as described in step 11.



11. Press the FWD (“FORWARD”) button *once* to forward the program four times as fast as normal play. Press the FWD button *twice* to forward at 15 times normal speed, *three times* to forward at 60 times normal speed, and *four times* to forward at 300 times normal speed.



12. Press the VIEW button to go back right away to the program in progress.
13. Press the RECORD button to start recording the program right now.
14. When the **Record Remainder of this Event** displays, select **OK** to start recording now. See page 54 for an explanation of the recording options.



Introduction



15. Select **OK** to start recording the program. Notice the receiver's front panel **RECORDING** light turns on.

16. If you want, press the **STOP** button. This stops the receiver from recording the program.

Notice the receiver's front panel **RECORDING** light turns off.



17. Now, if you want to take the time, use the **Program Guide** to find another program set to start in the next few minutes.

Note: Start watching the program when it starts. Watch the program for a few minutes.

18. Press the **BACK** button to reverse the program.

Note: Let the program reverse all the way to its start.



19. Press the **RECORD** button. The receiver stores a recording of all of the program broadcast so far, and keeps on recording the program. You can record all of the program, even though you didn't start recording until after the program started. **Note:** The receiver can hold up to about an hour of programming. If you are watching a program (for example, a football game) and start recording after about an hour into the program, the receiver will not record the entire program.



20. Press the **DVR** button. This opens the **DVR Events** menu on the TV screen.

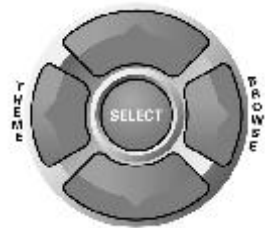
Note: Even though the button on your remote control may be marked *DVR* or *PVR*, the remote control works the same way.



Introduction



21. Use the remote control arrow buttons to highlight an event on the **DVR Events** menu (it's OK to highlight an event you're recording).



22. Press the remote control **SELECT** button to select the event you highlighted. This opens a menu of info about that event.
23. Press **VIEW TV** to return to your live programming.

