

# Chapter 1

---

## How to Get Started

### Welcome!

---

#### **You're about to enjoy a Digital Video Recorder!**

This satellite receiver lets you decide how you watch TV. You can record and play back audio and video with full digital quality. You can pause a live program and not miss any of the action or you can record a program to watch later, without a VCR.

This device is also an advanced satellite receiver, with features like a UHF/IR remote control, on-screen program information, themes to select programs, favorite lists, program locks, Dolby® Digital sound, and more.

#### **IMPORTANT INFORMATION ABOUT THIS RECEIVER**

- Always handle the satellite receiver carefully. Avoid excessive shock and vibration at all times as this can damage the hard drive.
- If you have the receiver turned on and need to move it, be sure to unplug the receiver and *let it sit for at least 30 seconds* before moving it.
- Do not install the receiver in any area where the temperature can be less than 40°F or more than 113°F while the unit is operating.
- If the receiver is cold to the touch, do not plug it in immediately. Let it sit *unplugged* at room temperature for at least 45 minutes before plugging it in.
- Avoid installing the receiver on top of or underneath another electronic device (such as a stereo receiver) as this can cause heat build-up and vibration.

**Note:** Portions of your system may be marked with *DishPVR* and *PVR* or *DishDVR* and *DVR*. Either way, the system works just the same.

## Overview

---

**Before you use your satellite receiver**, you need to install the system or have it installed by a professional technician. For a professional installation, please call the Customer Service Center at 1-800-333-DISH (3474). If you install the system yourself, use the instructions in *Chapter 4*.



A vital part of the installation is to set up the receiver to get the latest software via the satellite signal. You cannot use the receiver's features until you do! If you are installing a new system and follow the instructions in *Chapter 4*, your receiver will automatically get this software.

- After you install your system (or add this receiver to an existing system), all you need to do is order your program packages using the instructions on page 3.
- Take the *Quick Tours* that begin on page 4 to become familiar with product operation and features.
- To learn about the parts of the system, see *Parts of the System* on page 15.
- To learn how to use the system, see *Chapter 3, How to Use the System* on page 31.
- To troubleshoot the system, see *Chapter 5, Reference* on page 105.
- Tune to the DISH Network info channels or visit our Web site at [www.dishnetwork.com](http://www.dishnetwork.com) for info.
- For more help, call the Customer Service Center at 1-800-333-DISH (3474).

## New Features Video

---

Your new receiver comes with *New Features Video* software. This new software allows us to download information to your hard drive in the form of short, video messages which will appear in your **DVR List**. We will use these messages to tell you when we've updated your receiver to add exciting new features and capabilities. Be sure to look for these events whenever you access your recorded events — to see what's new for you from the DISH Network!

## Getting Started

---

### Order Your Program Packages

1. Turn on the receiver and your TV.
2. Press the **SYS INFO** button on the receiver front panel to open the **Important System Information** screen on the TV screen. Leave the menu open while you do steps 3 and 4.

**SYS INFO**



**Note:** The numbers in the figure below are for example only. Use the numbers on the **Important System Information** screen displayed on your TV.



3. Call 1-800-333-DISH (3474) to tell us you've installed the system and want to get services. We'll explain what program packages you can buy. You'll need to verify the information on the **Important System Information** screen.
4. We'll turn your services on via the satellite signal. This process usually takes just a few minutes. When we finish, you'll be able to watch your programs.
5. Press the **SELECT** button on the remote control or receiver front panel to clear the **Important System Information** menu from the TV screen.



## How to Get Started

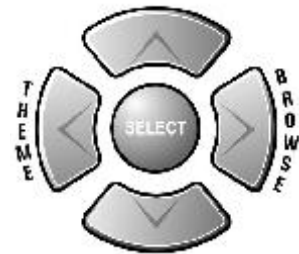
### Choose a Program to Watch

1. Make sure the receiver is on and its green front panel POWER light is on. Also, make sure you turn on the TV.
2. Press the remote control GUIDE button to open the receiver's

**Program Guide** on the TV screen.



3. Use the remote control ARROW buttons to move the highlight around the **Program Guide**, and to highlight a program that is on *now*.
4. Press the remote control SELECT button to watch the program you just highlighted.



### Quick Tour of Basic Features

---

1. Make sure the TV is on.
2. Press the UP or DOWN ARROW button to change channels.



3. Press the RECALL button to go back to the last channel you watched.



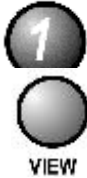
4. Press the **THEME** (LEFT arrow) button to open the

**Themes** menu.



5. For example, press the **1** button to see a list of movies.

6. Press the **VIEW** button to go back to watch a program.



7. Press the **INFO** button to see info about the program.

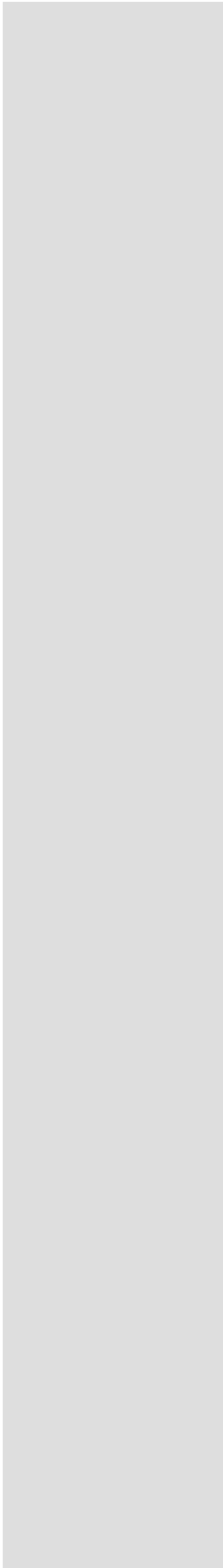


8. Press the **CANCEL** button to go back to watch the program.



9. Press the **BROWSE** (RIGHT arrow) button to open the **Browse Banner**.

In this example, the **Browse Banner** shows info on a program we're watching at the top, and info on another program at the bottom.



## How to Get Started

10. Press the UP or DOWN ARROW button to change the channel information you see at the bottom of the TV screen. Until you do, the bottom info is the same as the top info.



11. Press the RIGHT ARROW button to change the channel information you see at the bottom of the TV screen for the program coming next. Press the LEFT ARROW button to get back to the program on now.



12. Press the VIEW button to clear the **Browse Banner** from the TV screen and to go back to watching a program.



## Quick Tour of the Menus

1. Press the remote control MENU button to open the **Main Menu**.



2. Press the 1 button to select the **Program Guide** option on the **Main Menu**. This opens the **Program Guide** on the TV screen.



You can use the **Program Guide** to find a program to watch. For now, though, go on with this tour.



3. Press the **MENU** button to go back to the **Main Menu**.
4. Press the **2** button to select the **Themes and Search** option on the **Main Menu**. This opens the **Themes** menu on the TV screen.



5. For example, press the **1** button to see a list of movies.



## How to Get Started

6. Press the MENU button to go back to the **Main Menu**.
7. Back on the **Main Menu**, notice the **Mail** option. The mail feature is for DISH Network to send you messages, and only at special times.
8. Press the 4 button to select the **Favorites** option on the **Main Menu** to open the **Favorite Lists** menu. You can use **Favorite Lists** to make the **Program Guide** and other on-screen lists show only your favorite channels.

MENU



ghi

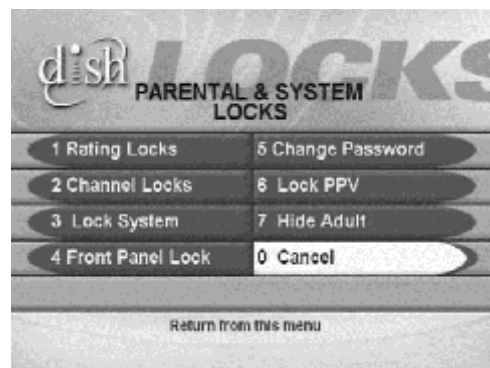


9. Press MENU to go back to the **Main Menu**.
10. Press the 5 button to select the **Locks** option on the **Main Menu**. This opens the **Locks** menu on the TV screen. This menu is used to set a lock.

MENU



jkl



11. Press MENU to go back to the **Main Menu**.
12. Press the 6 button to select the **System Setup** option on the **Main Menu**. This opens the **System Setup** menu.

MENU



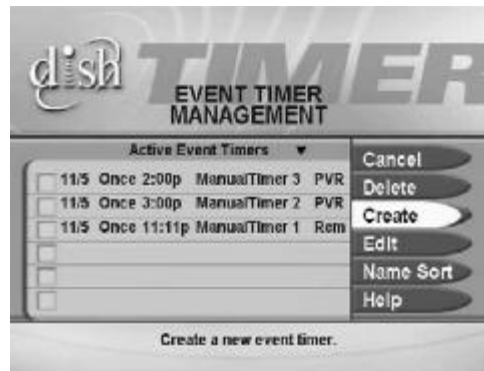
mno



Use this menu to set up the system the way you want.



13. Press MENU to go back to the **Main Menu**.
14. Press the 7 button to select the **Timers** option on the **Main Menu** to open the **Event Timer Management** menu.

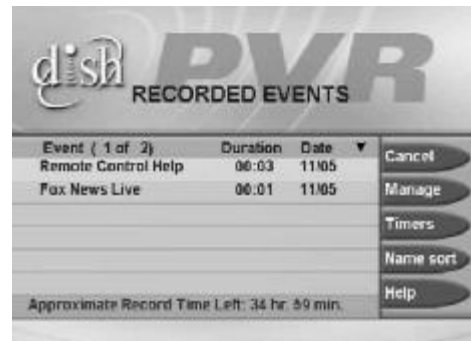


This menu is used for creating and changing timers used to trigger automatic recordings.

15. Press MENU to go back to the **Main Menu**.  
**Note:** Your screen may show *PVR* instead of *DVR*, but the receiver operates the same way.
16. Press the 8 button to select the **DVR Events** option on the **Main Menu**. This opens the **DishDVR Recorded Events** menu, which allows you to select and play back programs you recorded.



## How to Get Started



17. Press the VIEW button to go back to watching a program.

## Quick Tour of DishDVR Features

1. Watch a program for just a few minutes.
2. Press the PAUSE button to pause the program.



3. Press the PLAY button to watch the program from the point where you paused it.

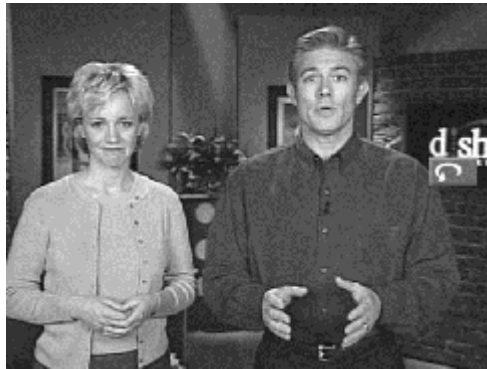


4. Press the VIEW button to go back right away to the "live" program.

5. Press the SKIP BACK button to skip back about ten seconds in the program.



## Quick Tour of DishDVR Features



6. Press the **PAUSE** button and then press the **BACK** button to reverse the program in slow motion. Press the **BACK** button *once* to reverse the program 1/4 the speed as normal play. Press the **BACK** button *twice* to reverse at normal speed. If you press the **BACK** button again, the program reverses as described in step 7.



7. Press the **BACK** button *once* to reverse the program four times as fast as normal play. Press the **BACK** button *twice* to reverse at 15 times normal speed, *three times* to reverse at 60 times normal speed, and *four times* to reverse at 300 times normal speed.



8. Press the **PLAY** button.



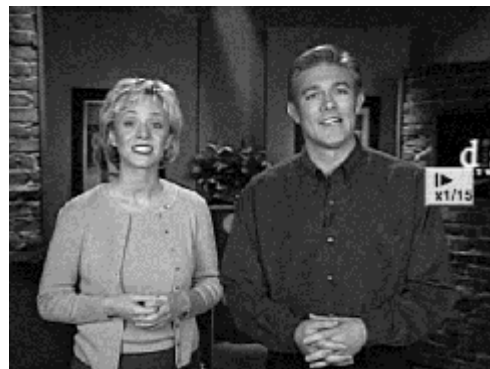
## How to Get Started

9. Press the SKIP AHEAD button to skip ahead about 30 seconds in the play back.

**Note:** You cannot skip ahead if you are watching live TV.



10. Press the PAUSE button and then press the FWD button to forward the program in slow motion. When you press the FWD button *once* the program advances at 1/15 the speed of normal play. Press the FWD button *twice* to forward at 1/4 as fast as normal play. Press the FWD button *three times* to play the program at normal speed. If you press the FWD button again, the program advances as described in step 11.



11. Press the FWD ("FORWARD") button *once* to forward the program four times as fast as normal play. Press the FWD button *twice* to forward at 15 times normal speed, *three times* to forward at 60 times normal speed, and *four times* to forward at 300 times normal speed.

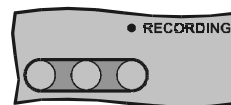


## Quick Tour of DishDVR Features

12. Press the **VIEW** button to go back right away to the program in progress.
13. Press the **RECORD** button to start recording the program right now.
14. The **Start Recording Options** menu displays. Select **Manual user stop**. See page 48 for an explanation of the other recording options.



15. Select **Done** to start recording the program. Notice the receiver's front panel **RECORDING** light turns on.



16. If you want, press the **STOP** button. This stops the receiver from recording the program.

Notice the receiver's front panel **RECORDING** light turns off.



17. Now, if you want to take the time, use the **Program Guide** to find another program set to start in the next few minutes.

**Note:** Start watching the program when it starts. Watch the program for a few minutes.

18. Press the **BACK** button to reverse the program.

**Note:** Let the program reverse all the way to its start.



19. Press the **RECORD** button. The receiver stores a recording of all of the program broadcast so far, and keeps on recording the program. You can record all of the program, even though you didn't start recording until after the program started.

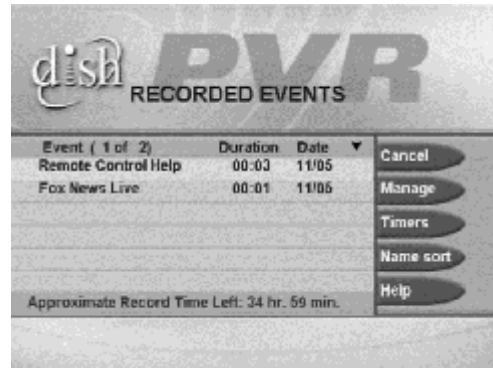


20. Press the **DVR** button. This opens the **Recorded Events** menu on the TV screen.

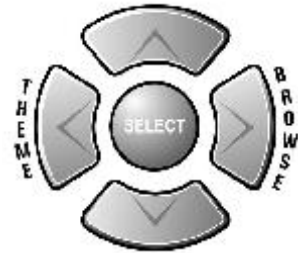
**Note:** Even though the button on your remote control may be marked *DVR* or *PVR*, the remote control works the same way.



## How to Get Started



21. Use the remote control arrow buttons to highlight an event on the **Recorded Events** menu (it's OK to highlight an event you're recording).



22. Press the remote control **SELECT** button to select the event you highlighted. This opens a menu of info about that event.
23. Press **VIEW** to return to your live programming.



## Conclusion

This is the end of the quick tours. Continue on to the next chapter, *Parts of the System*, for a detailed description of your DishDVR receiver.